

THE WORLD  
FEDERATION  
OF KSIMC

*Yemen Report*

WISH FOUNDATION



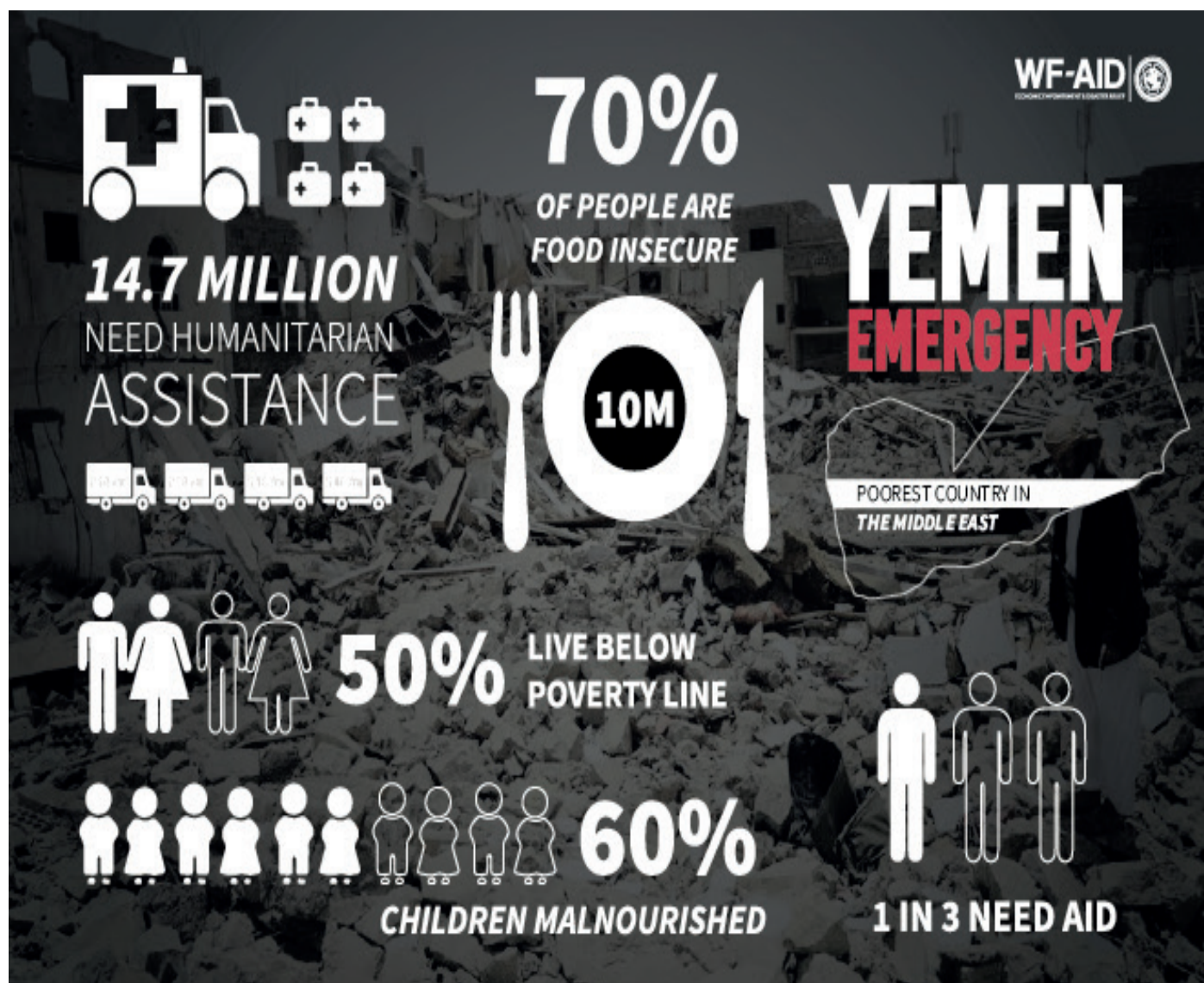
## YEMEN - BACKGROUND

Over the last few years, the people of Yemen have suffered a brutal war waged from the air that has killed many civilians. Families have been forced to leave their homes - and lives - behind as they flee to Yemen's capital Sana'a.

The violence has annihilated Yemen's most basic of infrastructure, prompting deadly disease outbreaks and squeezing the country's food supplies to the brink of starvation. Food prices have doubled in the last month. Of the 22 million people affected, 15 million are battling food hardship and around 10 million do not know where they will obtain their next meal from.

More than 5 million children are facing starvation right now in what could be the worst famine in 100 years.

Much more needs to be done in Yemen...





## OUR WORK IN YEMEN

We have been working urgently with our partners on the ground since May 2018 to provide food packs and medical aid to vulnerable families and those that are internally displaced.



### EMERGENCY FOOD

We have distributed over 17,500 food baskets in Sana'a and Hodeidah, reaching at least 87,000 individuals. Our focus of support is the elderly, widows and orphans primarily, as well as heads of family who are out of work.



Furthermore, through local sourcing of products we believe our aid is also providing crucial financial support to local wholesalers whose businesses are suffering severely.

Furthermore, through local sourcing of products we believe our aid is also providing crucial financial support to local wholesalers whose businesses are suffering severely.

### MEDICAL AID

Hodeidah too has been severely impacted by the ongoing war. Our assessments on the ground show that so many are gravely lacking access to basic healthcare for potentially life-threatening illnesses such as kidney treatment.

In July 2018, we provided critical dialysis treatment to 170 adults who had not been able to access medical support due to the ongoing bombings.



Many health centres had closed down or been destroyed which meant patients had to travel far or on dangerous routes for treatment. For many, it is simply too expensive to pay for in the current climate of poverty, danger and displacement.

# WHERE DID YOUR MONEY GO?

Thank you for the benevolent contribution that you have made totaling \$35,500 AUD, equivalent to \$25,057 USD.

Your generosity has enabled us to assist the urgent needs of desperate people.

Due to the circumstances in Yemen, we are required to remit in multiple tranches. The initial tranche reflected \$10,000 USD; the second tranche reflects the remaining amount of \$15,057 USD (\$21,332 AUD).

## DISTRIBUTION BREAKDOWN

	Amount in USD	Families/ Food Pack	Individuals
Tranche 1	\$10,000	250	1250
Tranche 2*	\$15,057	346	1732
<b>TOTAL</b>	<b>\$25,057</b>	<b>596</b>	<b>2982</b>

\* Total distribution costs of \$1200 USD have been charged against the second tranche. This includes travel, local labour etc.

These families have been facing food insecurity & unemployment as a result of internal displacement and are now settled in hard to reach areas across Sana'a.

Items included in each food basket:

- Ground wheat
- Lentils
- Cooking oil
- Milk/baby milk
- White Flour
- Sugar
- Rice
- Dates



Some of the food basket contents



Families collecting their food baskets



Food distribution to displaced families in Sana'a



THE WORLD  
**FEDERATION**  
OF KSIMC

---

The World Federation of KSIMC, Wood Lane, Stanmore, Middlesex HA7 4LQ

For more information; visit: [www.world-federation.org](http://www.world-federation.org)  
or email [secretariat@world-federation.org](mailto:secretariat@world-federation.org)

Registered Charity in the UK No. 282303